



PDF REQUIREMENTS

If you're setting up a PDF file for upload in our Online Editor, please read through the following specifications.

GENERAL CHECKLIST:

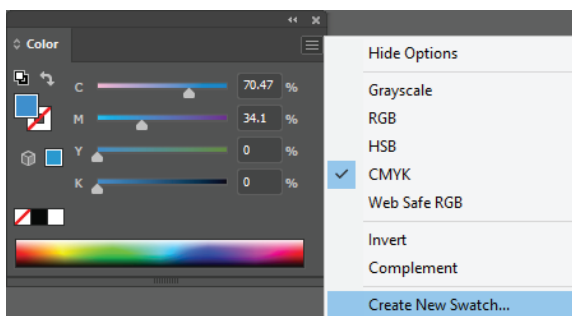
- ☐ PDF has only ONE page
- ☐ File has only ONE die-cut path
- ☐ Die-cut path is in a Spot Color (**no other objects in the same spot color**)
- ☐ Die-cut path is a closed path, no brush strokes or effects
- ☐ All text and fonts are outlined/vectorized
- ☐ Bleed and/or padding adhere to our specifications
- ☐ File must be under 25MB

DIE-CUTS

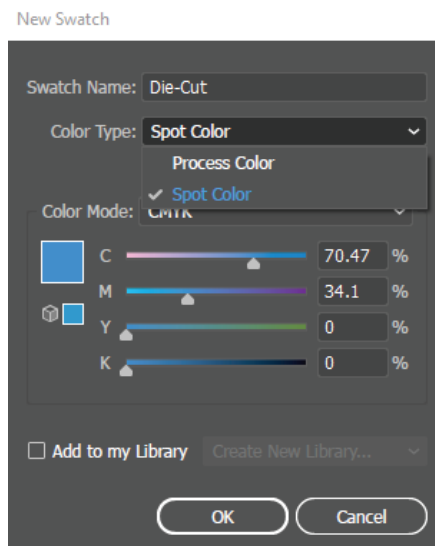
The sticker's die-cut **must** have a stroke color in a Spot Color, **not Process Color**. This Spot Color can be named anything, such as "Die-Cut". **Do not expand the die-cut stroke**, it must have a stroke and no fill to be recognized as a die-cut path. Die-cut path **cannot** be an open path nor have any effect or brush stroke on it. Die-cut path must be **at least 5pts** from artwork at actual size.

How to Create A Spot Color

Step 1: Color > Create new swatch any color



Step 2: Choose "Spot Color" > *Optional*
Name Swatch Color "Die-Cut" > OK



The spot color should then appear within your Swatches palette (Window > Swatches) with a black dot in the bottom right corner indicating that it's a spot color (see below).



Your die-cuts will look like this when selected (found in tool bar)



SIMPLIFY DIE-CUTS

When creating your die-cuts ensure that you are creating simplified paths that follow the image contours, contain few points and have smooth directional changes.



Original ✗

- too many points (45)
- sharp directional changes
- doesn't follow image contours

Simplified Die Cut ✓

- fewer points (25)
- smooth changes
- follows image contours



TRANSPARENCY

For Clear Stickers, Clear Labels, Clear Decals or Clings, make sure elements in your file that need to be transparent are knocked out, and not filled with any color. Any graphics in white will print with white ink as per your PDF file.



Original ✗

- visible white ink where there shouldn't be
- no transparent area

Transparent PNG ✓

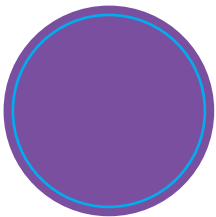
- visible white ink only where appropriate
- transparent area



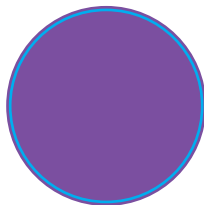
BLEED & PADDING

Bleed:

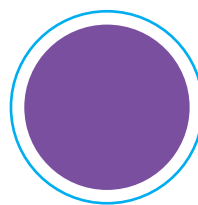
If you would like your graphic to be printed to the edge of your sticker, please include at minimum 5pt (0.07") of bleed on all sides.



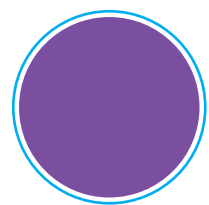
Correct Bleed ✓



Not Enough Bleed ✗



Correct Padding ✓



Not Enough Padding ✗