



Gold Foil UV DTF Image Transfers

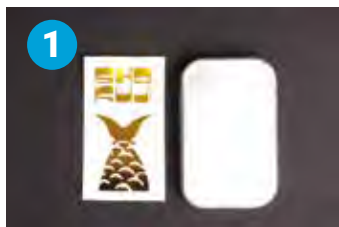
Application Instructions



Use FIRM
Pressure



Press On
Entire Graphic



1 **PREPARE** the sticker and the product/surface onto which the sticker will be applied. Make sure the surface is clean and dry.

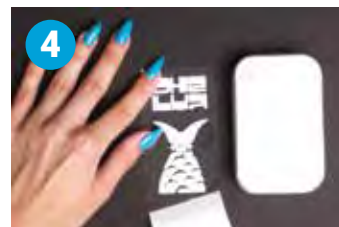
CLEAN the surface where you want to apply the sticker.



2 **PEEL** off a small corner of the clear sticker paper



3 **FLIP** the sticker laying it down on a flat surface, with the clear sticker film facing down. Start to fold away the white backing paper **very slowly** while the clear sticker film lies down on the flat surface.



4 **CONTINUE** to peel away the white paper. Make sure you are peeling off the white paper at a sharp angle. **DO NOT** pull the white paper up, pull it away in the direction you are peeling.



5 **ALIGN** the clear sticker paper with the object you are applying to.

MAKE SURE the alignment is perfect before applying any pressure. The sticker is permanent once applied onto the surface.

IMPORTANT: It will not be possible to reposition.



Once the sticker is applied. **PRESS** firmly on all areas to make sure the Sticker is firmly stuck to the surface. Let the sticker rest for 1 minute on the surface, before going to step 7.



Once the sticker is fully applied, **SLOWLY PEEL** the edge of the clear sticker film and start to remove.

CONTINUE to peel clear film away by rolling it off while applying pressure. Do not pull the clear film up. Pull towards the direction you are peeling off.

BE CAREFUL: if you peel off the clear film rapidly, you will

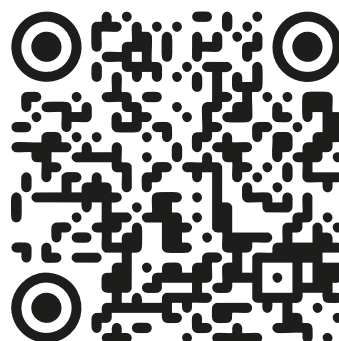


ADMIRE your artwork!

SEAMLESS application to hard, flat and curved surfaces like:

- **GLASSWARE** (Windows, Award Plaques)
- **APPLIANCES** (battery banks, chargers)
- **NOTEBOOKS** (leather, plastic, paper)

SCAN HERE for Application
Instructions Video





UV DTF Image Transfers

Application Instructions



1 **PREPARE** the sticker and the product/surface onto which the sticker will be applied. Make sure the surface is clean and dry.

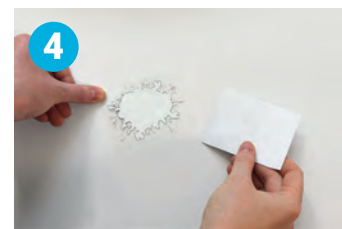
CLEAN the surface where you want to apply the sticker.



2 **PEEL** off a small corner of the clear sticker paper



3 **FLIP** the sticker laying it down on a flat surface, with the clear sticker paper facing down. Start to fold away the white backing paper while the clear sticker paper lies down on the flat surface.



4 **CONTINUE** to peel away the white paper. Make sure you are peeling off the white paper at a sharp angle.

DO NOT pull the white paper up, pull it away in the direction you are peeling.



5 **ALIGN** the clear sticker paper with the object you are applying to.

MAKE SURE the alignment is perfect before applying any pressure. The sticker is permanent and once applied onto the surface

IMPORTANT: It will not be possible to reposition.



Once the sticker is applied.
6 **PRESS** firmly on all areas to make sure the Sticker is firmly stuck to the surface.



Once the sticker is fully applied,
7 **PEEL** the edge of the clear sticker paper and start to remove.

CONTINUE to peel at a sharp angle. Do not pull the clear paper up. Pull towards the direction you are peeling off.



8 **ADMIRE** your artwork!

SEAMLESS application to hard, flat and curved surfaces like:

- **DRINKWARE** (water bottles, tumblers, mugs)
- **APPLIANCES** (battery banks, chargers)
- **NOTEBOOKS**
- **TOOLS**

Scan the QR Code to view our step by step instruction video

Visit https://bit.ly/sy_transfer

